

## 50mm Custom-Made Aluminium Venetian Blind Installation Instructions

### TOOL CHECKLIST REQUIRED:

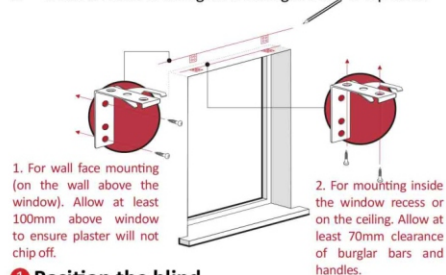
Drill (with 4.9mm drill bit)	Measuring Tape	Ruler
Screwdriver	Pencil	Step Ladder

This blind is supplied with a colour co-ordinated valance, bottom rail and accessories

### Hanging your blind

Using the universal brackets supplied, you can install your blind in one of two mounting positions:

1. Wall face mount (on the wall above the window) using the rear holes.
2. Window recess or ceiling mount using the side or top holes.



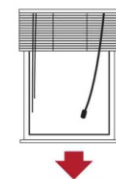
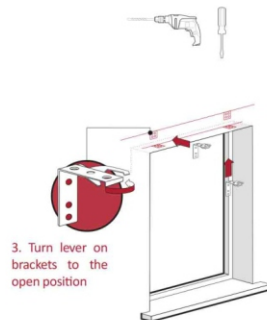
#### 1 Position the blind

Hold the blind in place where you are going to install it, making sure that it is centered and level. When positioned correctly, mark the position of each ladder lace that supports the slats onto the wall/surface with a pencil. Position each bracket approximately 45mm to the left or right of the pencil marks and then mark the position of the bracket holes onto the wall/surface with the pencil. Ensure that the brackets do not block the tilting mechanism.

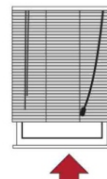
#### 2 Drill the holes and attach brackets

**Concrete or Brick:** Drill holes where you marked the bracket holes, using a 4.9mm masonry bit and insert wall plugs provided. Place bracket over holes and screw tight with screws provided into the wall plugs.

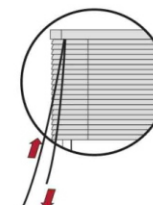
**Wood:** Drill holes where you marked the bracket holes, using a 4.9mm steel bit. Place bracket over holes and screw tight with screws provided.



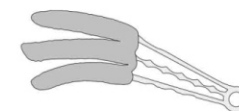
**To lower the blind** pull the cords to the center of the blind to release the cord-lock and hold while the blind drops. Allow the blind to drop to the desired height and then slowly release the cords to their original position to lock it into place.



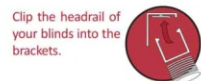
**To raise the blind** pull the cords to the center of the blind to release the cord-lock and pull up the blind to the desired height. Slowly release the cords to their original position to lock it in place.



**To tilt the slats** hold one of the open ended cords in each hand and slowly pull in a downward direction on one of the cords, this will tilt the angle of the slats. By pulling the other cord in a downward direction, the angle of the slats will move in the reverse direction.



**Periodic dusting is recommended.** Use your vacuum cleaner and upholstery brush attachment to gently vacuum clean. Be careful not to suck onto the blind surface as this may cause damage.



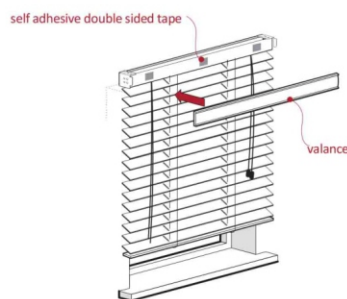
3. Once the headrail is in place, turn the lever on the brackets to the closed position

#### 3 Drill the holes and attach brackets

**Concrete or Brick:** Drill holes where you marked the bracket holes, using a 4.9mm masonry bit and insert wall plugs provided. Place bracket over holes and screw tight with screws provided into the wall plugs.

**Wood:** Drill holes where you marked the bracket holes, using a 4.9mm steel bit. Place bracket over holes and screw tight with screws provided.

Peel off the backing layer of the self adhesive double sided tape on the headrail. Align the valance and headrail and firmly press the valance against the headrail, so that they are attached.



#### 4 Attach the additional items

Attach the valance to the headrail using the self adhesive double sided tape

### WARNING: Strangulation Hazard

**Never put a crib or child's bed near a window.** Even if you have child's guards on the window, the temptation to investigate from a hanging window covering is strong for a child

**Because young children climb, never put furniture near a window with a dangling cord.** Children climb on furniture, play with cords or chains and can become entangled.

To secure cords out of reach of children, use one of the suggested methods:

- A: Tie cord to itself.  
B: Use a cleat on wall or window frame.  
C: Use a clamp or clothes peg.

